
iX104 Wireless Information

Xplore Wireless Parts

<u>Xplore Part Number</u>	<u>Wireless cards and cables</u>
⊕ 11-25029	802.11AB New web card <ul style="list-style-type: none">• 55-01092 Cable kit
⊕ 11-25022	802.11b Cisco Aironet card <ul style="list-style-type: none">• 55-01093 Cable kit
⊕ 11-25036	802.11b Spectrum 24 card <ul style="list-style-type: none">• 55-01093 Cable kit
⊕ 11-25031	1902G RIM GPRS card (North America) <ul style="list-style-type: none">• 55-01089 / 55-01091 / 55-01094 Cable set
⊕ 11-25033	1802G RIM GPRS card (Europe) <ul style="list-style-type: none">• 55-01089 / 55-01091 / 55-01094 Cable set
⊕ 11-25037	Internal GPS module card <ul style="list-style-type: none">• 55-01102 / 55-01109 / 11-14020 Cable set

You must load the software first and follow instructions with CDMA card

- ⊕ 11-25028 Sierra 555 CDMA card
 - 55-01095 / 55-01091 cables

- ⊕ 11-25038 Sierra 555 CDMA Prov – card and cables
 - 55-01095 / 55-01091 cables

The Sierra card will have to be activated before installation. This may cause delay in getting the Sierra cards.

Wireless Configurations

Wireless Configurations

Wireless Radio Bays

- ⊕ One internal Type I or Type II PC card slot (PCMCIA cardbus ver. 3.0)
 - ⊕ One internal Mini-PCI slot
 - ⊕ One internal OEM radio bay for RIM 1902G & 1802G GSM/GPRS radios or GPS module
-

Wireless Configurations

	OEM Bay	PC Card Slot	Mini-PCI Slot
LAN/WAN Config. 1	RIM 1802/1902G Used for Worldwide GSM/GPRS (WAN)	Cisco Aironet 350 Used for Worldwide 802.11b LAN networks	
LAN/WAN Config. 2	Internal GPS (WAAS)	Cisco Aironet 350 Used for Worldwide 802.11b LAN networks	
LAN/WAN Config. 3		Sierra Wireless AirCard 555 Used for North American CDMA WAN networks	Xplore iX104 OEM Used for Worldwide 802.11ab LAN networks (Neweb)
You can use these maximum configurations or remove either one (1) of the two (2) radios for a LAN or WAN only wireless configuration			



Cisco Aironet 350



Sierra Wireless
AirCard 555



NewWeb EM9-AB



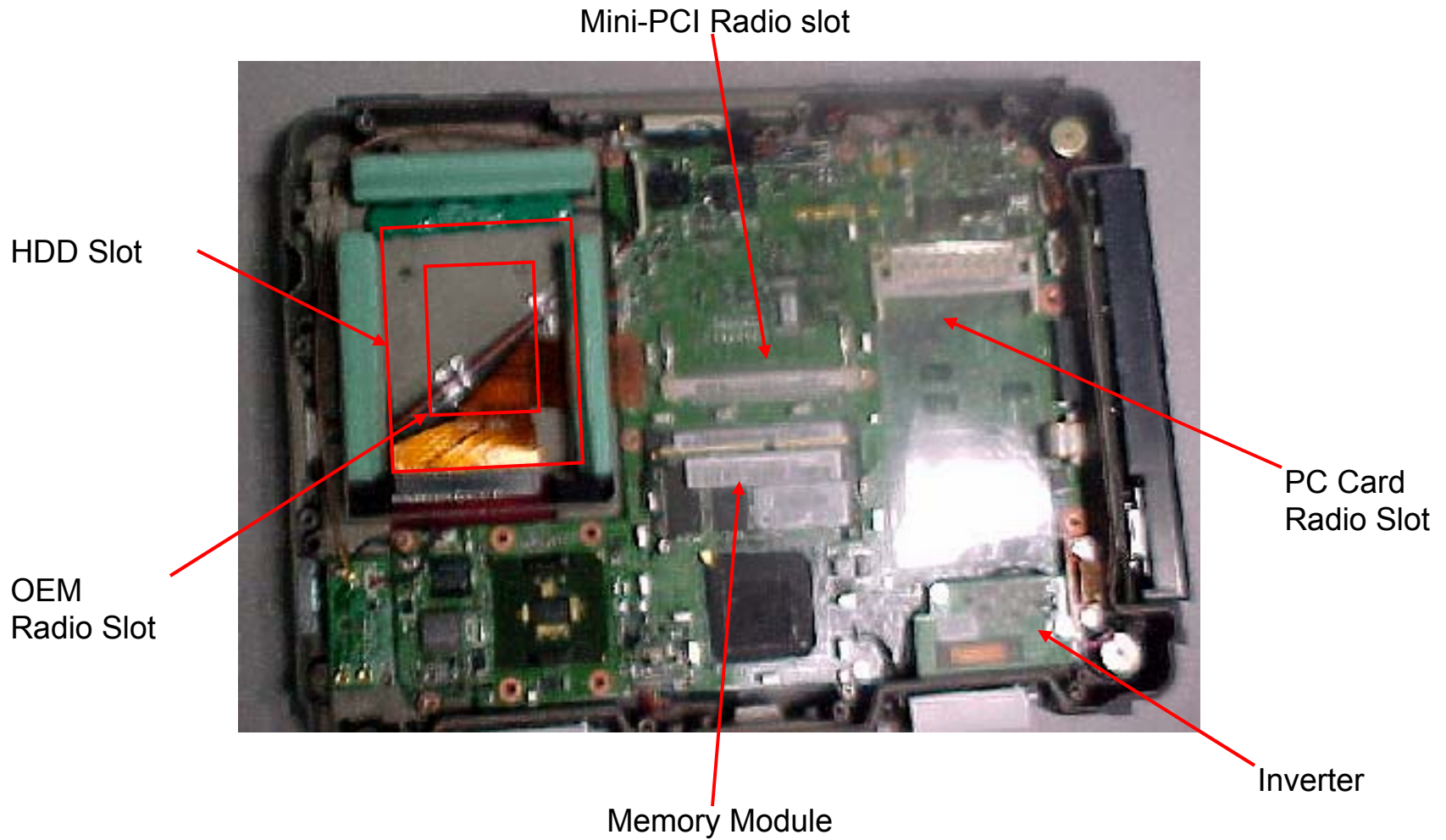
RIM 1902G (US) &
1802G (Europe)



GPS receiver

Installing Wireless devices

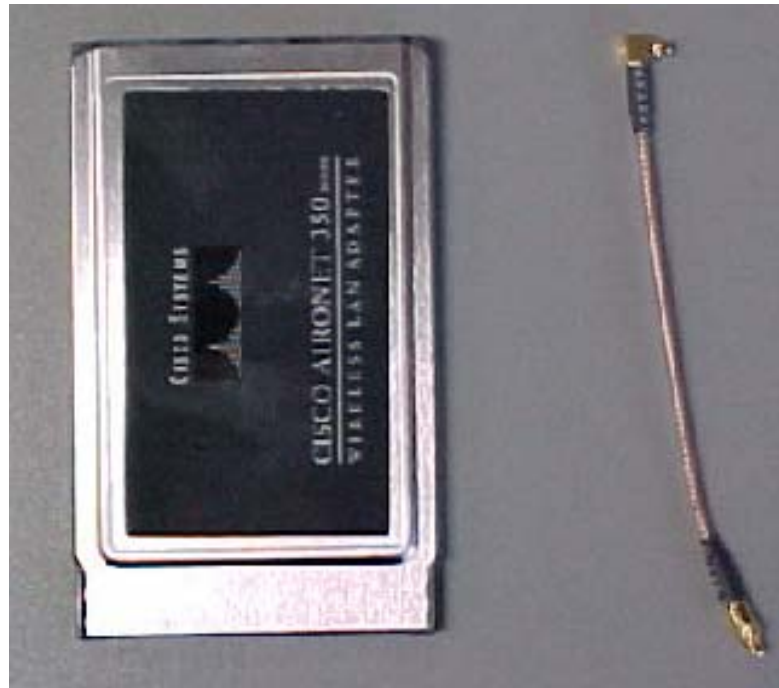
Interior View



Cisco 350 wireless card installation

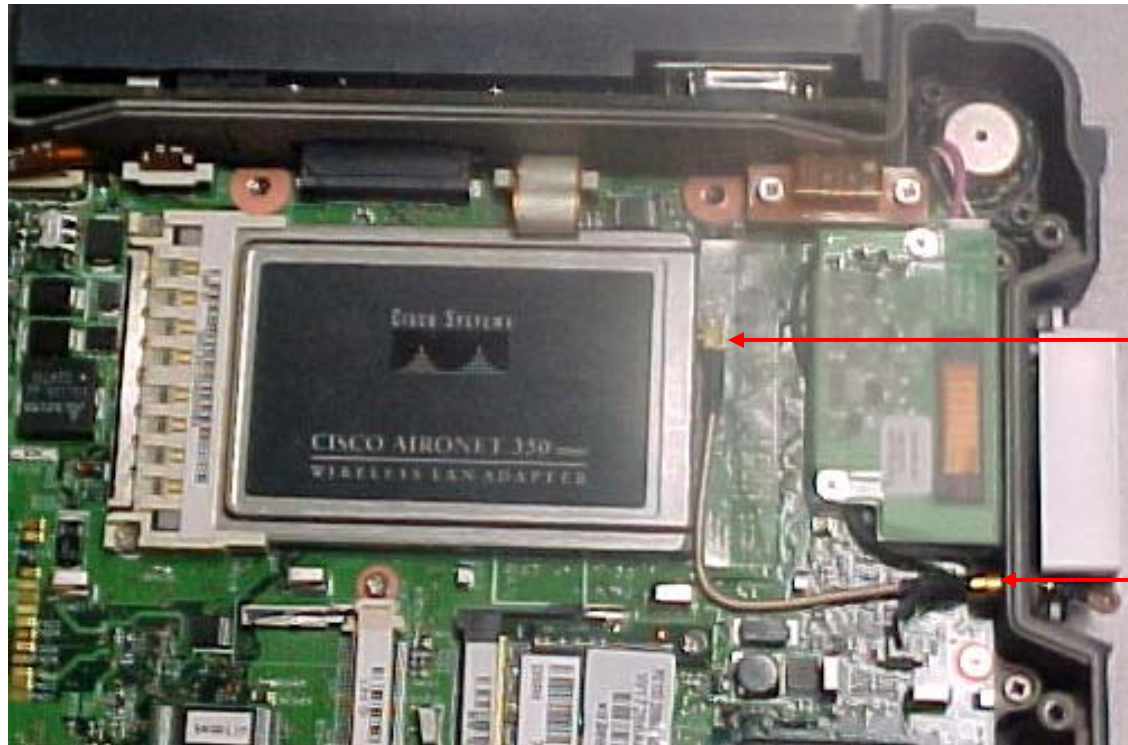
Items Needed:

- ⊕ 11-25022 Cisco Aironet 350
- ⊕ 55-01093 CBL, MMCX Plug STR to MMCX Plug R/A



Installation:

- ⊕ Connect antenna cable to Cisco 350 wireless card onto the connector which is located closest the I/O ports when card is inserted into PCMCIA socket
- ⊕ Install card into slot. Route antenna cable as shown in picture. Connect Cable to antenna



Antenna
connection #1

Antenna
connection #2

NeWeb EM9-AB wireless card installation

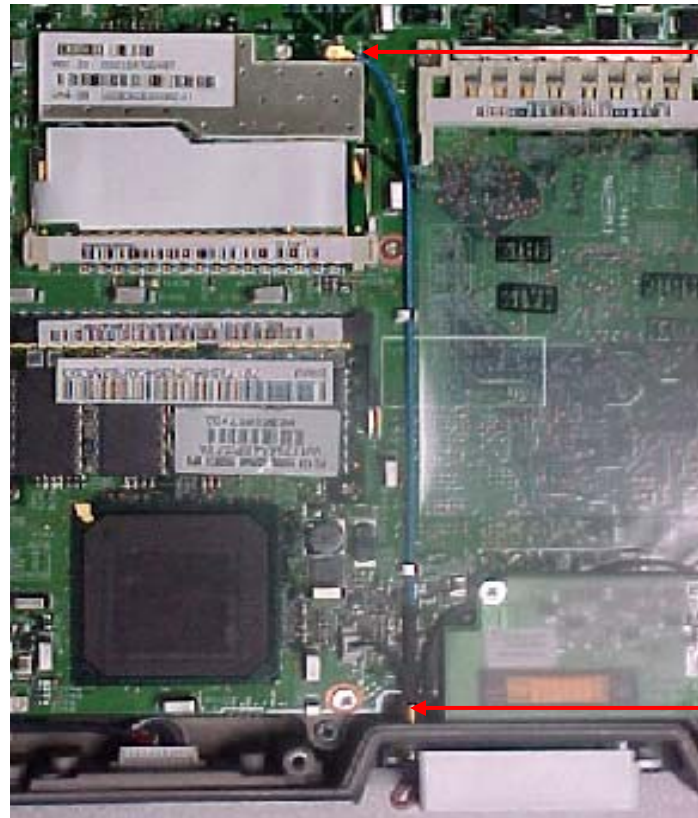
Items Needed:

- ⊕ 11-25029 Acer NeWeb
- ⊕ 55-01092 CBL, MMCX Plug STR to MMCX Plug R/A



Installation:

- ⊕ Connect antenna cable to Mini-PCI card.
- ⊕ Install Mini-PCI card into slot. Connect other end of cable to external antenna



Antenna
connection #1

Antenna
connection #2

SIM installation into OEM radio card

Items Needed:

- ⊕ 11-25031 / 11-25033 Radio, GPRS, 1902G (US) or 1802G (EUR)
- ⊕ SIM module provided by customer



1. Detach SIM from plastic card



2. Open slot in the back of RIM. Place SIM into slot

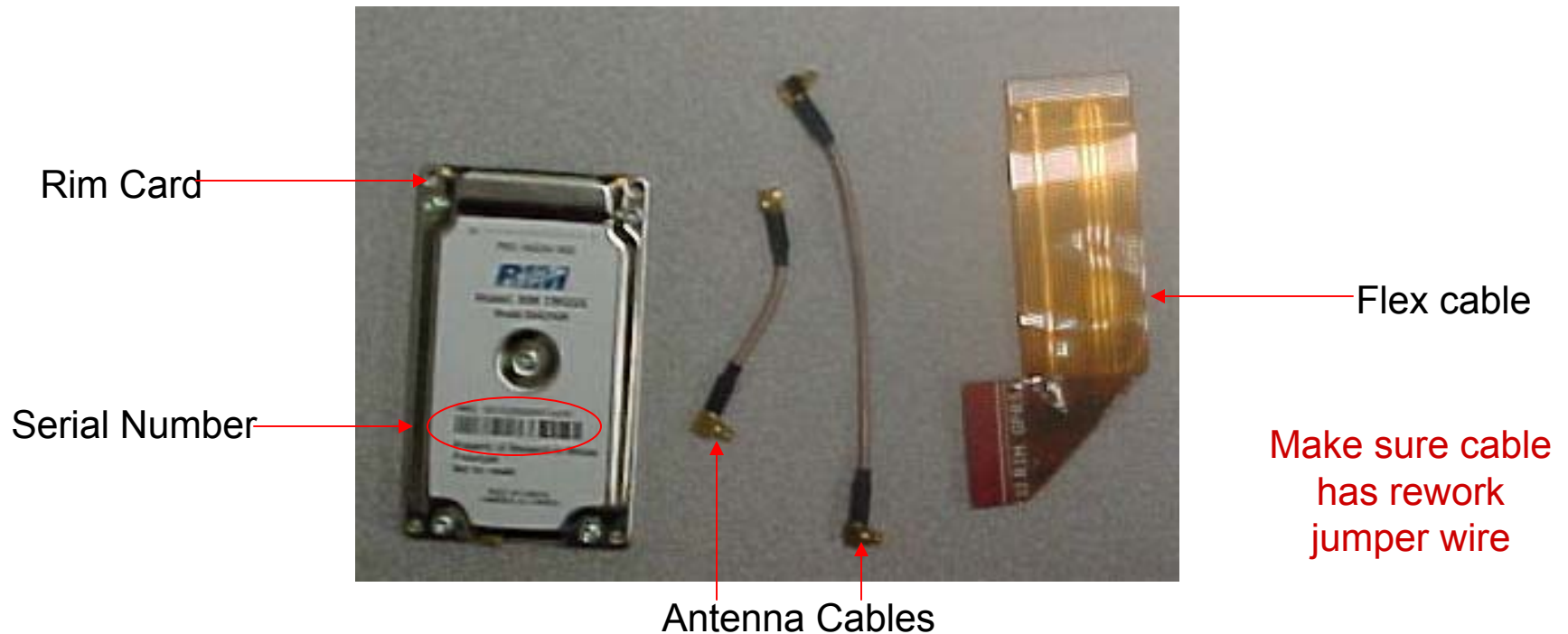


3. Close slot with SIM in it. Snap slot into place
4. Place RIM label on back of card.

OEM wireless card installation

Items Needed:

- ⊕ 11-25031 / 11-25033 Radio, GPRS, 1902G (US) or 1802G (EUR)
- ⊕ 55-01090 CBL, MMCX Plug R/A to MMCX Plug R/A
- ⊕ 55-01091 CBL, MMCX Plug R/A to MMCX Plug R/A
- ⊕ 55-01094 CBL, RIM flex cable



Installation:

- ⊕ Connect flex cable (55-01094) to top of RIM card.
- ⊕ Connect longer antenna (55-01090) cable to bottom of card

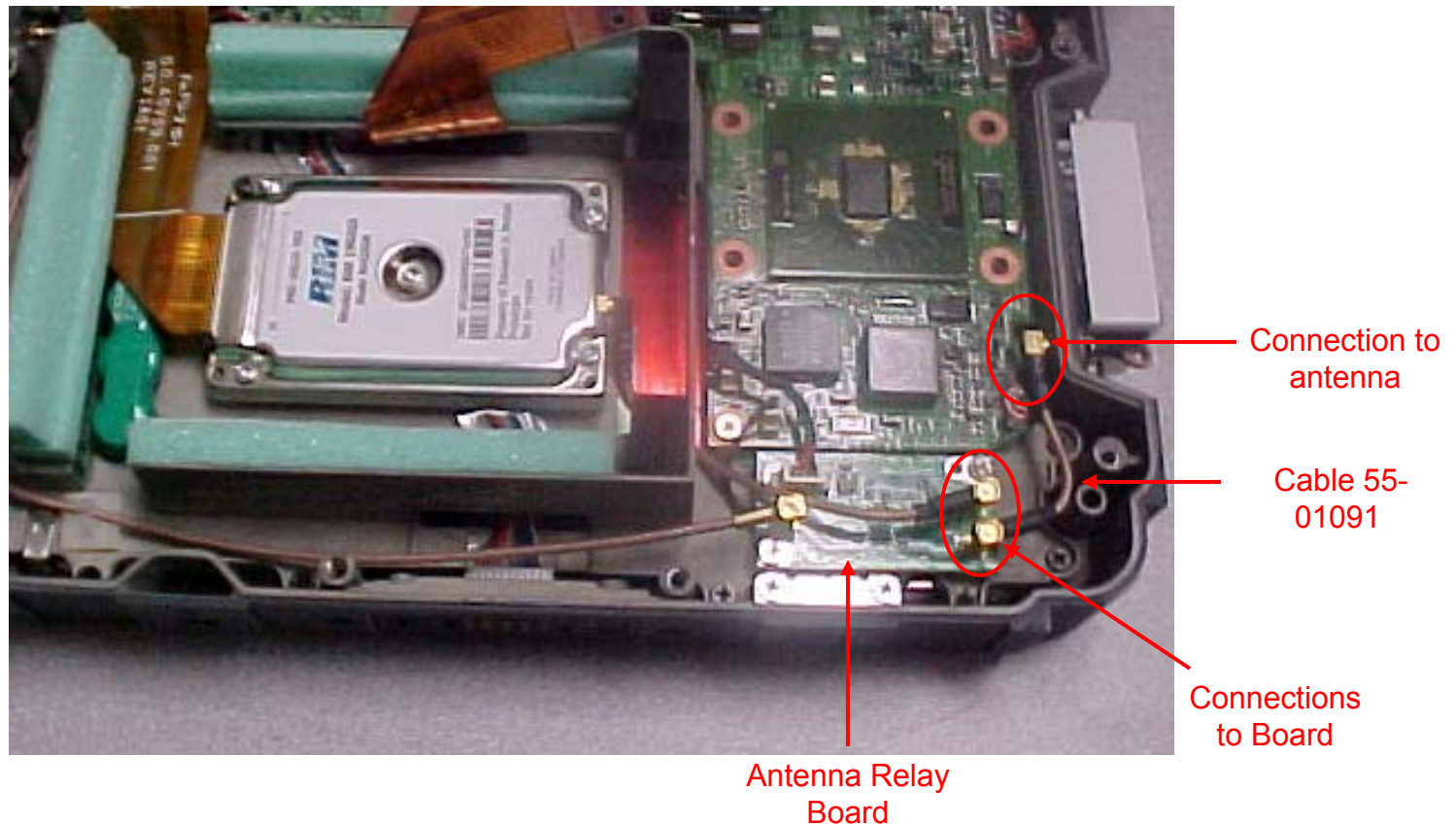


Flex cable
(55-01094)

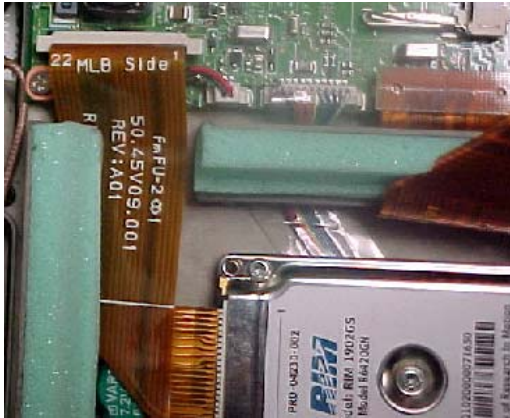
Antenna Cable
(55-01090)

Installation (contd.):

- ✦ Insert Rim card into well of unit. Connect RIM coax cable to antenna relay board. Connect shorter coax cable from relay board to antenna



Installation (contd.):

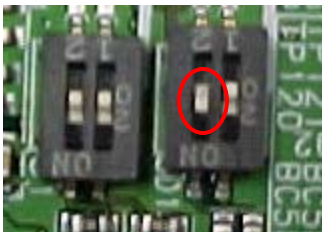


Connect other end of flex cable to connector on MLB



Secure RIM card with 2 screws (53-01501) One screw on each end of card

Note : Verify that flex, and antenna cables are firmly seated.



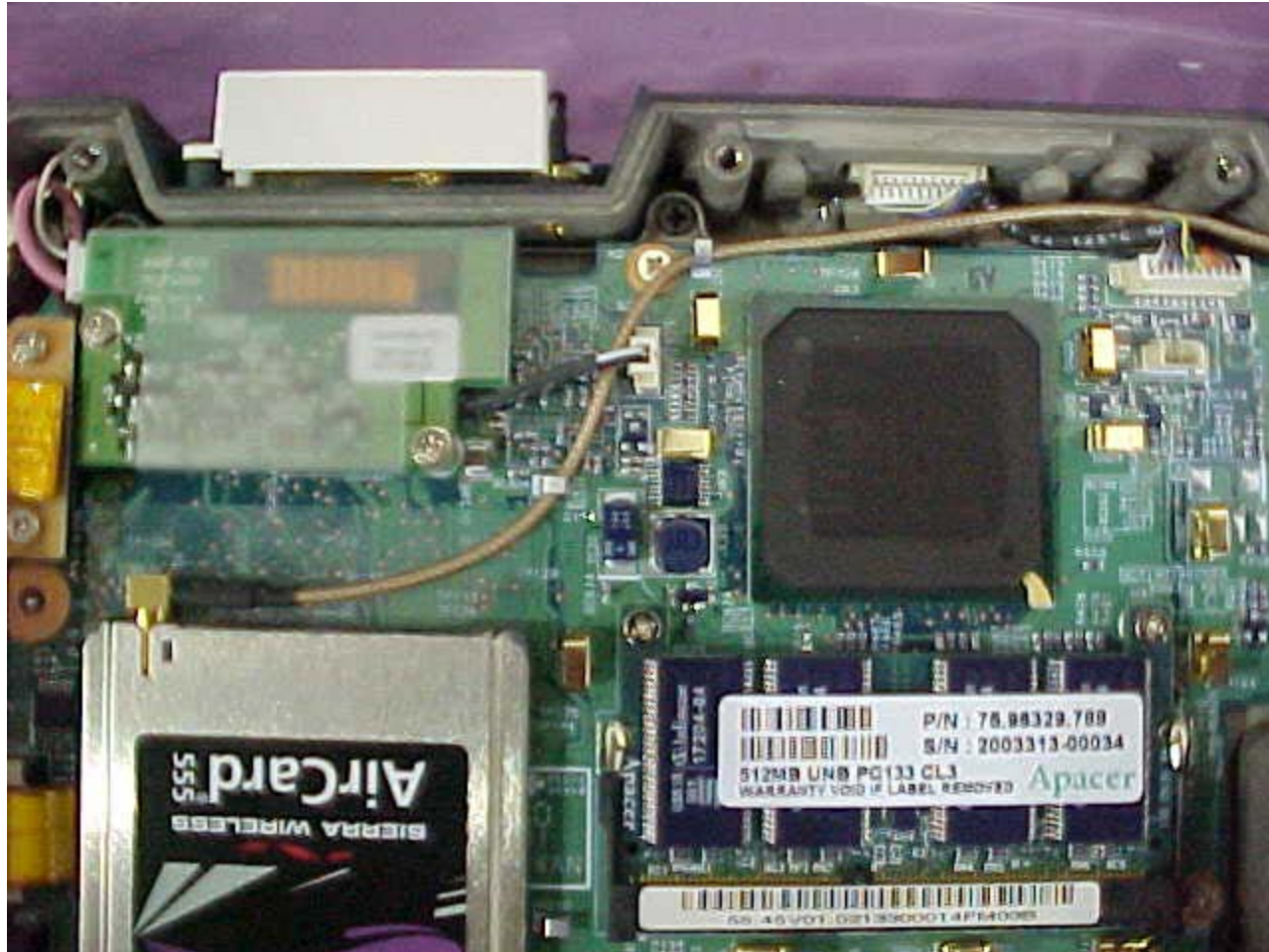
Remove inverter on main board, and change switch 2 on SD1 to the ON position. Replace inverter.

CDMA Sierra 555 card Assembly Instruction

1. Complete the software installation instructions. It is important to note that if the card is installed before the software installation it will result in permanently damaging the AC555 card.
2. Connect the antenna cable to the AC555 card

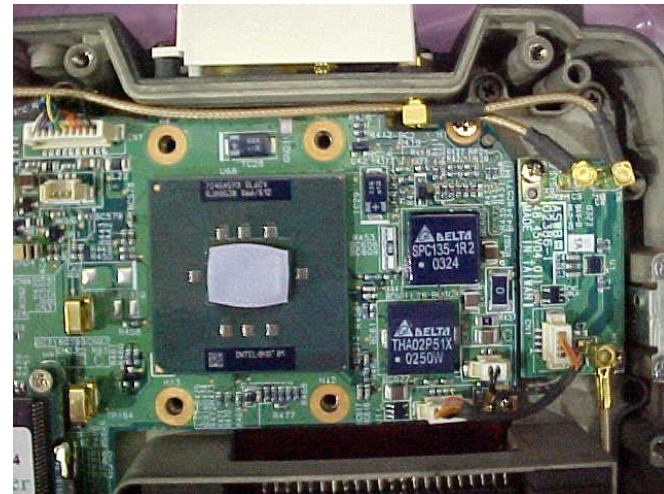
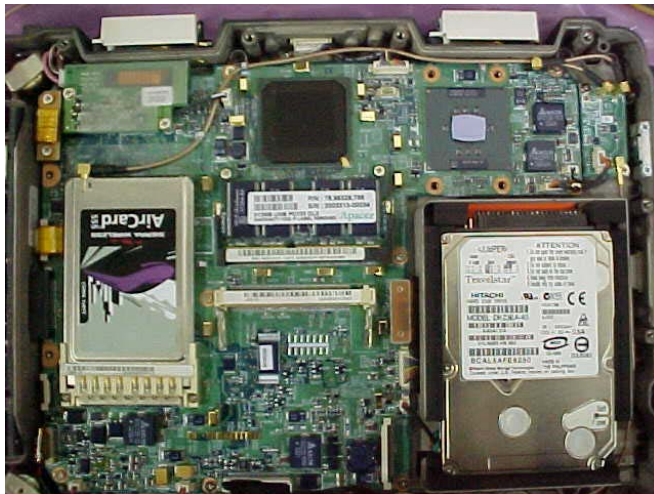


3. Insert the AC555 card in the PCMCIA card

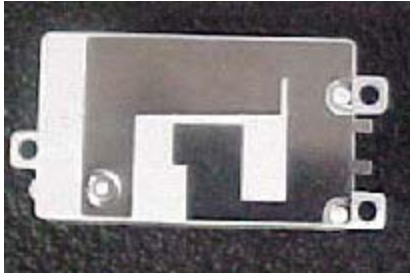


4. Follow the pictures below for proper routes and connections of the two internal RF cables.

It is important to note that if the internal RF cable does not follow the route show in pictures below; it will result in damaging the cable or/and damaging the unit.



iX104 Antenna installation



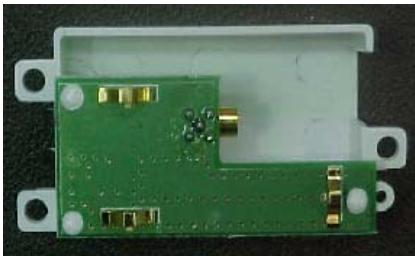
P/N 11-14017

Antenna, Tri-Band 900 MHz – 1.9 GHz (WAN)



P/N 11-14016

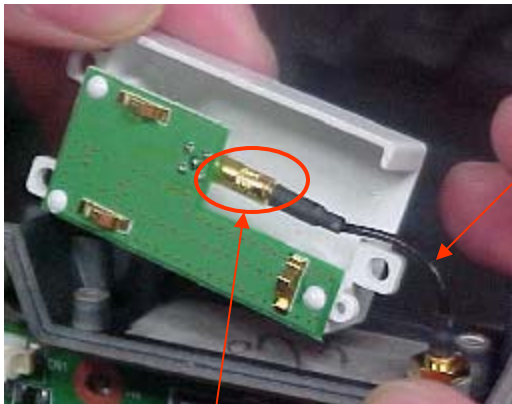
Antenna, Dual-Band 2.4 – 5.8 GHz (LAN) 802.11ab



Back view of Antenna



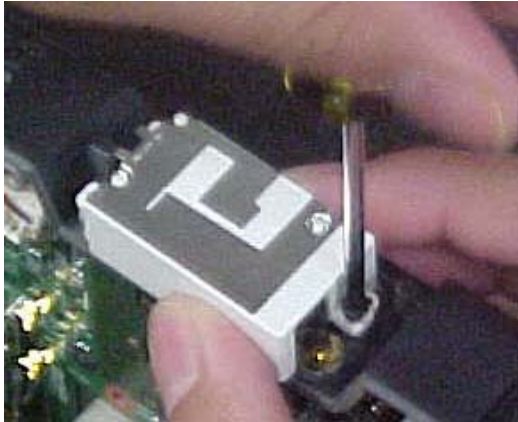
Connect antenna to antenna cable



Antenna cable

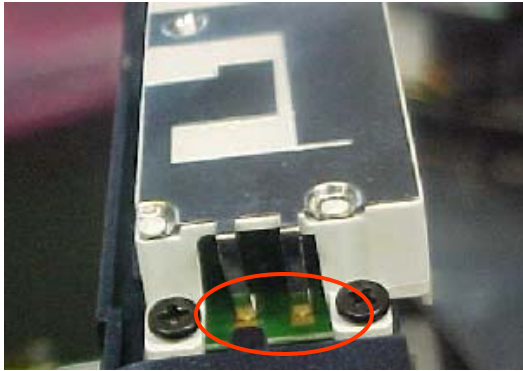
Antenna connected

Note: Verify that there is a solid connection between antenna, and cable

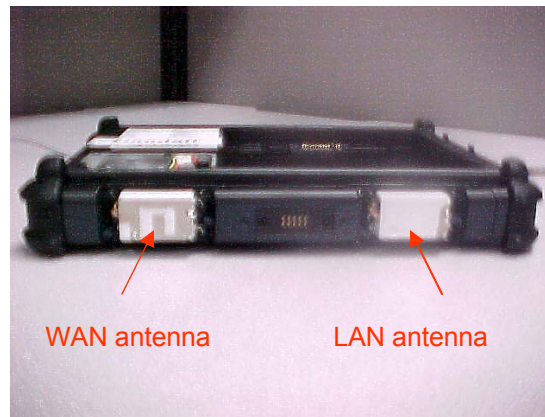


Secure antennae with 3 screws each. WAN antenna is installed above the hard drive/Fan. LAN antenna is installed on the opposite side

Torque screws 2.6 in lbs.



Note: Verify that metal prongs make solid contact with pads on board of antenna



Note: Verify that antennae are installed in the correct position