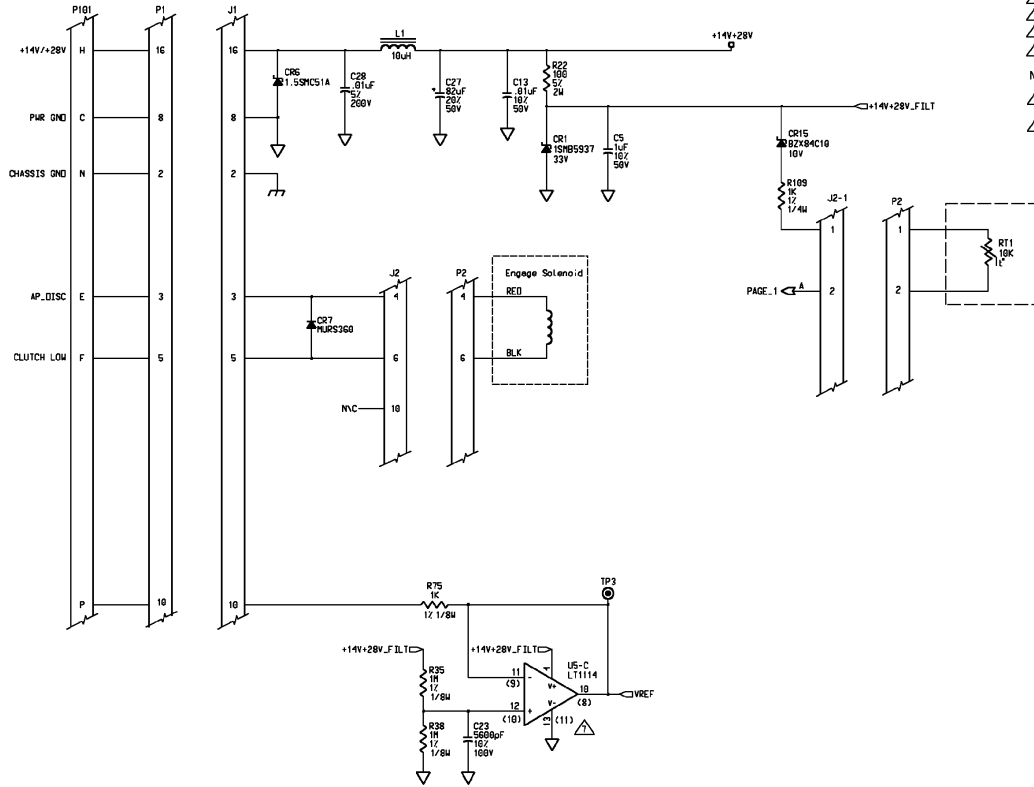


FIGURE 6-10 SERVO BOARD ASSEMBLY SCHEMATIC 002-09835-0000
(Dwg No 002-09835-0000, Rev -, Sheet 1 of 2)



- NOTES:
- ⚠ P101 is a harness connector external to the P.C. board.
 - ⚠ Symbols located inside of dashed boxes denote components external to the P.C. board.
 - ⚠ P1 and P2 mate to J1 and J2 respectively.
 - ⚠ R46 and R47 are specified on 065-00179-XX06 BOM.
 - ⚠ C2 and C4 not installed.
 - NOTE 5 APPLYS TO 065-00179-0600 FLAVOR ONLY.
 - ⚠ R74, R107, AND N2 ARE NOT INSTALLED ON 065-00179-0600 FLAVOR.
 - ⚠ WHEN A 14 PIN NC33074 IC IS USED IN PLACE OF A 16 PIN LT1114 IC THE NUMBERS IN () SHALL BE USED.

FIGURE 6-10 SERVO BOARD ASSEMBLY SCHEMATIC 002-09835-0000 (Sheet 2 of 2)