



Automated briefing prepared for **N113AC**
 flying from **EGKA to EDLW on 100207 at 0900**
 Best printed with top and bottom page margins set to 0.25"

Airport Information and Observations

(source: DAFIF@GCM and NOAA ADDS)

DEPARTURE

name

**Shoreham
(EGKA/ESH)**

location

**Shoreham-by-Sea,
England, United
Kingdom**

50°50'08"N
0°17'50"W

elevation

7 ft (2 m)

no. of runways

3

sunrise

07:26Z

sunset

17:04Z



Photo may not be current and should not be used for surface operations.

latest observations

- **NOTICE:** Information is more than 5 hours old.
- Winds from the N (350 degrees) at 6 knots (7 MPH; 3.1 m/s).
- Visibility greater than 7 miles (11+ km).
- Ceiling at least 12,000 feet AGL.
- Sky conditions few clouds at 1400 feet AGL.
- Temperature 5°C (41°F), dew point 4°C (39°F) [RH = 93%].
- Pressure 30.06 inches Hg (1018 hPa).

Point-to-point GC calculations: 301nm bearing 79° (02:27)

DESTINATION

name

**Wickede
(EDLW/DTM)**

location

**Dortmund, North
Rhine-Westphalia,
Germany**

51°31'05"N
7°36'44"E

elevation

425 ft (130 m)

no. of runways

1

sunrise

06:56Z

sunset

16:30Z



Photo may not be current and should not be used for surface operations.

latest observations

- **NOTICE:** Information is more than 2 hours old.
- Winds from the N (360 degrees) at 3 knots (3 MPH; 1.5 m/s).
- Ceiling 300 feet AGL.
- Sky conditions broken clouds at 300 feet AGL with fog.
- Temperature 1°C (33°F), dew point 1°C (33°F) [RH = 100%].
- Pressure 30.03 inches Hg (1017 hPa).



Automated briefing prepared for **N113AC**
 flying from **EGKA** to **EDLW** on **100207** at **0900**
 Best printed with top and bottom page margins set to 0.25"

Departure and Destination Weather

(source: NOAA ADDS)

EGKA

taf data

NOTICE: More than 3 hours old.

AMD EGKA 061925Z 0618/0621
 CNL

metar data (last 4)

NOTICE: More than 1 hour old.

EGKA 062150Z NIL

EGKA 062050Z NIL

EGKA 061950Z NIL

EGKA 061850Z NIL

EDLW

taf data

NOTICE: More than 5 hours old.

EDLW 061700Z 0618/0622
 03006KT 1500 BR SCT003
 BKN005 TEMPO 0618/0622 0500
 DZ FG BKN002

metar data (last 4)

EDLW NIL

EDLW 062050Z 36003KT 0800
 R06/1500N FG BKN003 01/01
 Q1017 RMK ATIS L

EDLW 062020Z 03003KT 0800
 R06/1400N FG BKN002 00/00
 Q1017 RMK ATIS K

EDLW 061950Z 05003KT 0800
 R06/1300N FG BKN001 00/00
 Q1017 RMK ATIS J

Alternate Destination Weather

(source: NOAA ADDS)

EDLP

taf data

NOTICE: More than 5 hours old.

EDLP 061700Z 0618/0622
 VRB03KT 0100 FG OVC000
 TEMPO 0618/0622 0500 FG
 BKN002 PROB30 TEMPO
 0618/0622 1100 BR BKN005

metar data (last 4)

EDLP 062220Z VRB02KT 0100
 R24/0250N FG VV/// 00/M07
 Q1017

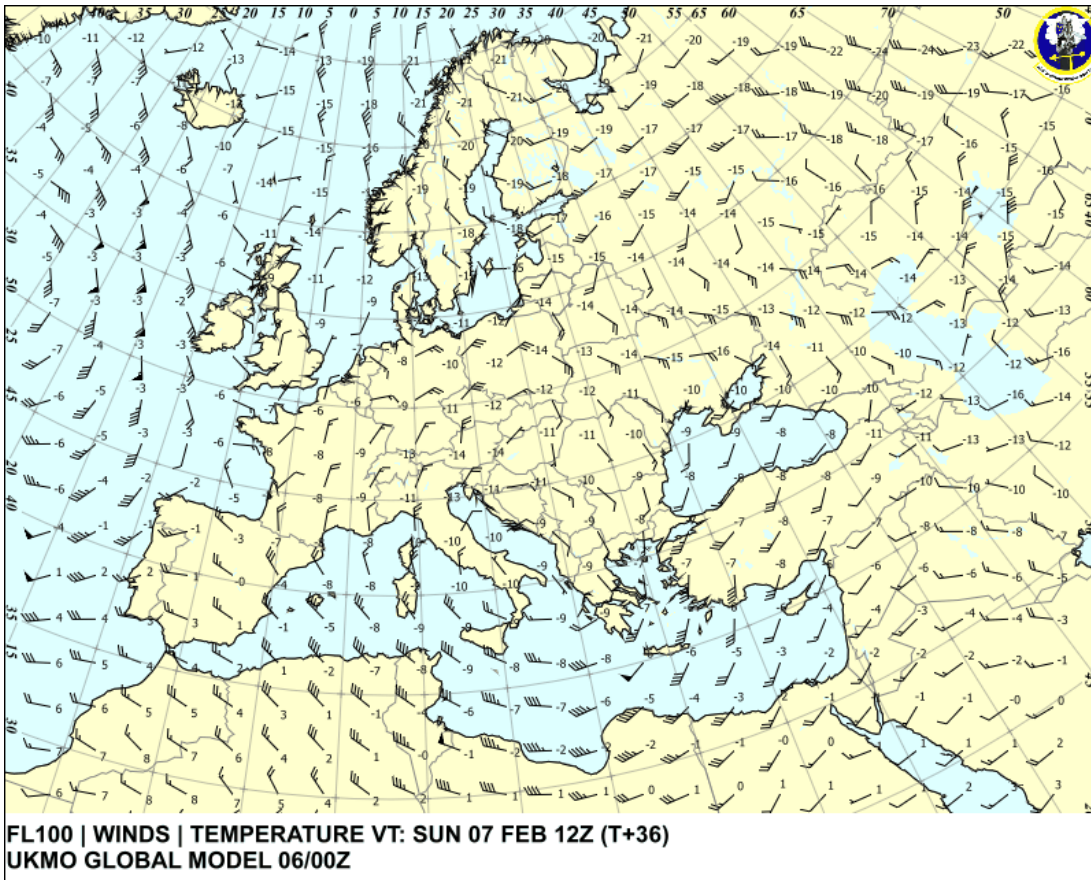
EDLP 062150Z 02002KT 0100
 R24/0250N FG VV/// 00/M03
 Q1017 RMK RWY24 TRL60 RU
 ATIS L

EDLP 062120Z 27002KT 0100
 R24/0225N FG VV/// 00/M05
 Q1017

EDLP 062050Z 29001KT 0100
 R24/0250N FG VV/// 00/M06
 Q1016 RMK RWY24 TRL60 RU
 ATIS J

European Winds Aloft Forecast

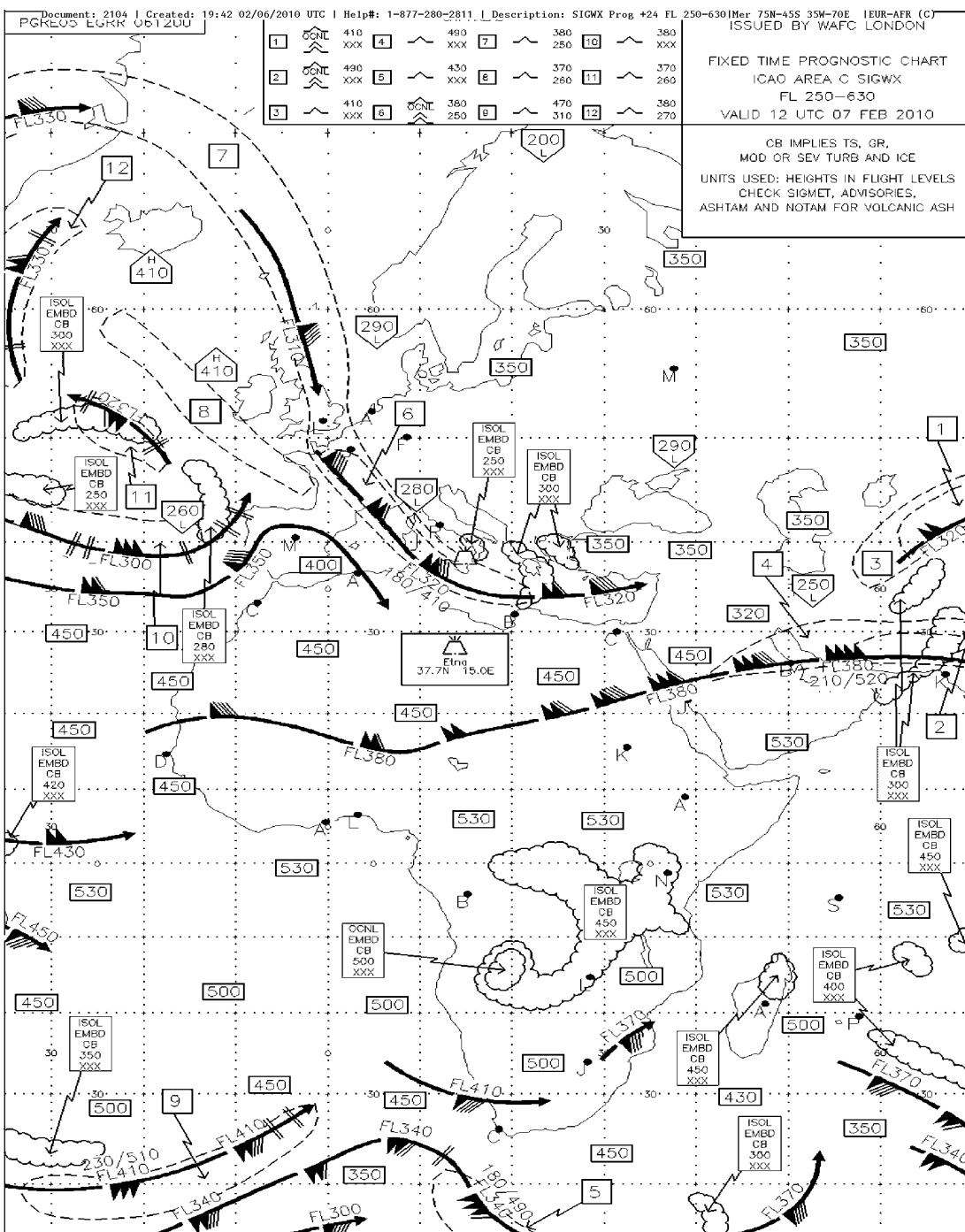
(source: OWS Sembach)



Adjusted for most relevant time, date, and flight level. Click image to view time-loop.

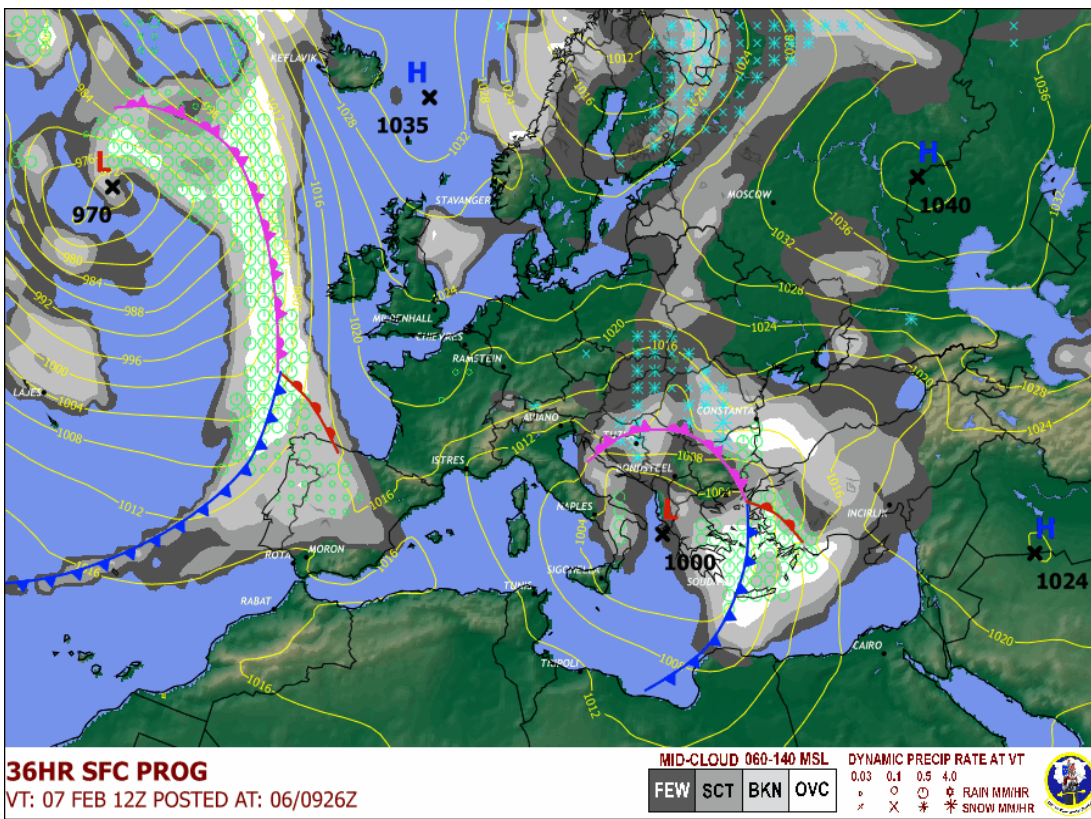
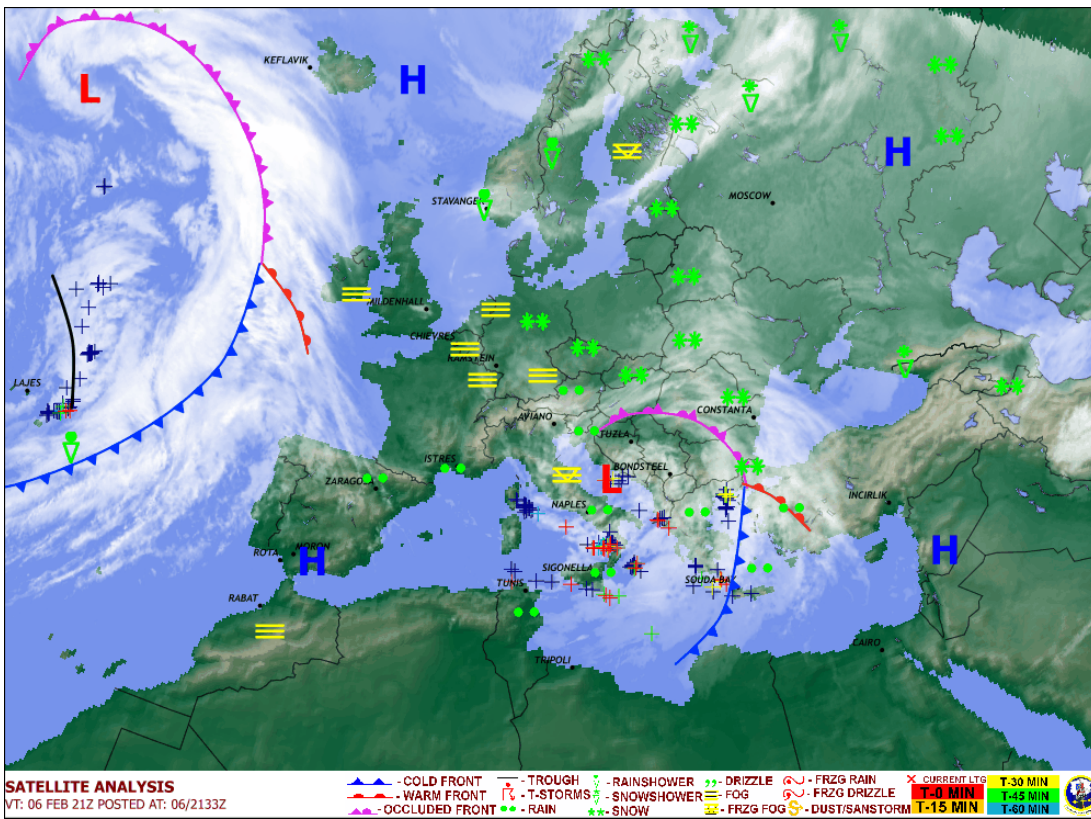
European SIGWX Prognostic Chart

(source: NOAA ADDS)



European Satellite and Surface Analysis

(source: OWS Sembach)



Departure and Destination NOTAMS

(source: FAA NAIMS PilotWeb)

EGKA SHOREHAM

C0758/10 - GRASS RWY 07/25 AND 13/31 CLSD TO FIXED WING AIRCRAFT DUE WATERLOGGING. 31 JAN 10:43 2010 UNTIL 14 FEB 19:00 2010 ESTIMATED. CREATED: 31 JAN 10:44 2010

C0757/10 - IBN 'SH' U/S. 31 JAN 10:40 2010 UNTIL 14 FEB 19:00 2010 ESTIMATED. CREATED: 31 JAN 10:42 2010

EDLW DORTMUND

C3384/09 - ILS GP RWY 24 RESTRICTED. USABLE ONLY BTN 6 DEG NORTH AND 8 DEG SOUTH. 17 DEC 13:49 2009 UNTIL 17 MAR 23:59 2010 ESTIMATED. CREATED: 17 DEC 13:49 2009

C3326/09 - DORTMUND-WICKEDE NDB DWI 357 ON TEST, DISREGARD ALL SIGNALS. 14 DEC 06:03 2009 UNTIL 14 MAR 23:59 2010 ESTIMATED. CREATED: 14 DEC 06:04 2009

C2107/09 - OCA(H) VALUES CHANGED AS FOLLOWS: VOR RUNWAY 06: A 930 (510), B 930 (510), C 930 (510), D 930 (510) VOR RUNWAY 24: A 880 (480), B 880 (480), C 880 (480), D 880 (480) REF. AIP AD2- EDLW 4-3-1, 4-3-2. 25 AUG 14:44 2009 UNTIL PERM. CREATED: 25 AUG 14:45 2009

C1905/08 - NDB APCH RWY 24 AND RWY 06 SUSPENDED. REFER AIP AD 2 EDLW 4-4-1 AND 4-4-2, DATE 16 FEB 2006. 16 OCT 10:28 2008 UNTIL PERM. CREATED: 28 FEB 07:16 2009

C0396/10 - DORTMUND TWR FREQ 386.950MHZ OUT OF SERVICE. 01 FEB 12:00 2010 UNTIL PERM. CREATED: 01 FEB 12:01 2010

C0069/10 - NEW CRITICAL AREAS FOR ILS RWY 24 AT EDLW HAVE BEEN SET IN FORCE. DUE TO POSSIBLE SHORT TIME ILS INTERFERENCE CAUSED BY PRECEDING LDG ACFT. THE FLW PROCEDURE WILL APPLY DURING ILS OPS TO SUCCEEDING APPROACHING ACFT ON THE ILS OR PLANNED FOR THE ILS APCH. CAT I A) WHEN IT IS EXPECTED BY ATC THAT THE PRECEDING LANDING ACFT WILL TAXI THROUGH THE CRITICAL AREA OF THE ILS LOCALIZER, THE FLW INFO WILL BE ISSUED TO THE OTHER APPROACHING ACFT ON TWR OR APP FREQ: 'EXPECT SHORT-TIME ILS INTERFERENCE' B) THE TAXI PROCESS SHALL BE EXECUTED WITHOUT DLA. ADDN PROVISIONS FOR ALL WEATHER OPERATIONS CAT II: C) THE CRITICAL AREA OF THE ILS LOCALIZER SHALL BE VACATED AT THE LATEST WHEN SUCCEEDING APPROACHING ACFT IS ON FINAL AT 4NM FROM TOUCHDOWN. OTHERWISE A MISSED APPROACH PROCEDURE WILL BE INSTRUCTED BY ATC. 06 JAN 09:53 2010 UNTIL 31 MAR 23:59 2010 ESTIMATED. CREATED: 06 JAN 09:54 2010

C0068/10 - NEW CRITICAL AREAS FOR ILS RWY 06 AT EDLW HAVE BEEN SET IN FORCE. DUE TO POSSIBLE SHORT TIME ILS INTERFERENCE CAUSED BY PRECEDING LDG ACFT. THE FLW PROCEDURE WILL APPLY DURING ILS OPS TO SUCCEEDING APPROACHING ACFT ON THE ILS OR PLANNED FOR THE ILS APCH. CAT I A) WHEN IT IS EXPECTED BY ATC THAT THE PRECEDING LANDING ACFT WILL TAXI THROUGH THE CRITICAL AREA OF THE ILS LOCALIZER, THE FLW INFO WILL BE ISSUED TO THE OTHER APPROACHING ACFT ON TWR OR APP FREQ: 'EXPECT SHORT-TIME ILS INTERFERENCE' B) THE TAXI PROCESS SHALL BE EXECUTED WITHOUT DLA. ADDN PROVISIONS FOR ALL WEATHER OPERATIONS CAT II: C) THE CRITICAL AREA OF THE ILS LOCALIZER SHALL BE VACATED AT THE LATEST WHEN SUCCEEDING APPROACHING ACFT IS ON FINAL AT 4NM FROM TOUCHDOWN. OTHERWISE A MISSED APPROACH PROCEDURE WILL BE INSTRUCTED BY ATC. 06 JAN 09:49 2010 UNTIL 31 MAR 23:59 2010 ESTIMATED. CREATED: 06 JAN 09:49 2010

C0042/10 - OM ILS RWY 24 OUT OF SERVICE. DISREGARD ALL SIGNALS. 04 JAN 12:36 2010 UNTIL 04 APR 23:59 2010 ESTIMATED. CREATED: 04 JAN 12:37 2010

F0128/10 - WIND POWER PLANT ERRECTED 1NM S OF UNNA PSN 513043N 0074050E, ELEV 783FT/238FT AGL. NOT MARKED AND LIGHTED. PUBLICATION ON RELATING CHARTS WILL FOLLOW. VFR ARR/DEP ECHO AFFECTED.) DUPE. 15 JAN 12:10 2010 UNTIL PERM. CREATED: 15 JAN 12:11 2010

EDLP PADERBORN LIPPSTADT

C3496/09 - TRIGGER NOTAM TO PERM AIP AIRAC AMDT 14 EFFECTIVE 17 FEB 2010. CHANGES TO INSTRUMENT APCH CHARTS. 11 FEB 00:00 2010 UNTIL 28 FEB 23:59 2010. CREATED: 30 DEC 11:34 2009

C3281/09 - MSA SECTOR 065 DEG TO 145 DEG RAISED TO 2500FT MSL. REF AIP AD2 EDLP 4-2-1, 4-2-2, 4-4-1, 4-4-2, 5-7-3, 5-7-5. 08 DEC 10:26 2009 UNTIL PERM. CREATED: 08 DEC 10:27 2009

C2429/09 - OCA(H) VALUES CHANGED AS FOLLOWS: NDB RWY 06: A 1200 (510), B 1200 (510), C 1200 (510), D 1200 (510) FT. RNAV (GPS) RWY 06: A 1200 (510), B 1200 (510), C 1200 (510), D 1200 (510) FT. DUE TO NEW OBSTACLE SURVEY. AIP AD 2 EDLP 4-4-2, 4-6-2 REFER. 24 SEP 00:00 2009 UNTIL PERM. CREATED: 22 SEP 06:28 2009

C0375/10 - TWYS B,C,F,G,L AND M CLOSED, DUE TO SNOW. 31 JAN 14:03 2010 UNTIL 08 FEB 23:59 2010. CREATED: 31 JAN 14:03 2010

C0153/10 - ILS GP RWY 24 ONLY USEABLE WITHIN LATERAL SECTOR 230 AND 244 DEG. 12 JAN 08:03 2010 UNTIL 28 FEB 23:59 2010. CREATED: 12 JAN 08:03 2010

C0076/10 - NEW CRITICAL AREAS FOR ILS RWY 24 AT EDLP HAVE BEEN SET IN FORCE. DUE TO POSSIBLE SHORT TIME ILS INTERFERENCE CAUSED BY PRECEDING LDG ACFT. THE FLW PROCEDURE WILL APPLY DURING ILS OPS TO SUCCEEDING APPROACHING ACFT ON THE ILS OR PLANNED FOR THE ILS APCH. CAT I A) WHEN IT IS EXPECTED BY ATC THAT THE PRECEDING LANDING ACFT WILL TAXI THROUGH THE CRITICAL AREA OF THE ILS LOCALIZER, THE FLW INFO WILL BE ISSUED TO THE OTHER APPROACHING ACFT ON TWR OR APP FREQ: 'EXPECT SHORT-TIME ILS INTERFERENCE' B) THE TAXI PROCESS SHALL BE EXECUTED WITHOUT DLA. 06 JAN 10:17 2010 UNTIL 31 MAR 23:59 2010 ESTIMATED. CREATED: 06 JAN 10:18 2010

C0075/10 - NEW CRITICAL AREAS FOR ILS RWY 06 AT EDLP HAVE BEEN SET IN FORCE. DUE TO POSSIBLE SHORT TIME ILS INTERFERENCE CAUSED BY PRECEDING LDG ACFT. THE FLW PROCEDURE WILL APPLY DURING ILS OPS TO SUCCEEDING APPROACHING ACFT ON THE ILS OR PLANNED FOR THE ILS APCH. CAT I A) WHEN IT IS EXPECTED BY ATC THAT THE PRECEDING LANDING ACFT WILL TAXI THROUGH THE CRITICAL AREA OF THE ILS LOCALIZER, THE FLW INFO WILL BE

ISSUED TO THE OTHER APPROACHING ACFT ON TWR OR APP FREQ: 'EXPECT SHORT-TIME ILS INTERFERENCE' B) THE TAXI
PROCESS SHALL BE EXECUTED WITHOUT DLA. 06 JAN 10:13 2010 UNTIL 31 MAR 23:59 2010 ESTIMATED. CREATED: 06
JAN 10:13 2010

To view extended NOTAMS with enroute and ARTCC/UIR/FIR information [click here](#).